

YOUR 100 % SATISFACTION IS OUR PURSUIT



85 COUNTRIES AND 1522 CASES



Changzhou RAYMOND Precision Machinery Co.,Ltd (Manufacturer)
 Changzhou RAYMOND International Trading Co.,Ltd (Export platform)
 Add: 5# ChuangSheng Road, Luoyang Industrial Zone, Luoyang town,
 Wujin District, Changzhou city, Jiangsu Province, China PC. 213104
 Tel:0086-519-85585188 Fax:0086-519-88522598
 Mobile:0086-135.8531.5748 What's app:0086-135.8531.5748
 E-mail:raymondexport@rayattachments.com
 Website: www.rayattachments.com

MAKE YOUR JOB EASIER AND FASTER

Changzhou RAYMOND Precision Machinery Co.,Ltd
 Changzhou RAYMOND International Trading Co.,Ltd



RAY ATTACHMENTS

Established in 2002, Changzhou Raymond Precision Machinery Co.,Ltd is a professional manufacturer of excavator attachments like hydraulic breaker, earth auger, quick coupler, hydraulic demolition grapple and so on. Changzhou Raymond International Trading Co.,Ltd is its sister company as Imp. & Exp. Platform. RAY Attachments is our brand on behave of China Made Brand.

We have gotten good reputation due to our stable supply capability and high quality with competitive price. Of course, we have over 20 years of customers service experience, it enable us to make our products have competitive advantages, products have been exported to many countries like Europe, Middle East, South-East Asian and Latin America and we are always expanding the global market. Our vision is become a century-old enterprise with more than 108 years.



Development History

2002
Changzhou Chuangcheng Precision Steel Tube Co.,Ltd founded in 2002, which made a contribution to Chinese infrastructure construction.

2006
We have had our own factory for production since 2006, which is about 5 acres, converted to about 20,000 m².

2009
In 2009, Changzhou Raymond International Trading Co.,Ltd established and became the bridge of connecting home and abroad market, mainly selling steel pipes and construction machinery attachments.

2012
In 2012, our hydraulic earth augers were officially put into production, which Made a grand debut in the Shanghai Bauma Exhibition and won many domestic and overseas customers.

2013
On December 12, 2013, the first team called Wudi, which means the greatest team, established and started the teamwork.

2017
In 2017, the International trading department moved from the factory in Luoyang Town to downtown, which made great significance to attract talents.

2019
By 2019, our excavator attachments have covered 20 different kinds of products, including hydraulic earth auger, quick hitch, hydraulic breaker, hydraulic grapple and so on.

2021
In 2021, our International trading team and products expand to achieve the goal of 100 millions sales.

108 years +

Our vision is become a century-old enterprise with more than 108 years.

“ Slogon of RAYMOND ”
Everyone loves RAYMOND.



Mission:

Make your project easier and faster, make your life more intelligent.



Vision:

Become a century-old enterprise with more than 108 years.



Value:

Customer First, Creator-oriented, Teamwork, Embracing Change, Honesty and Trustworthiness, Passion and Optimism, Dedication, Unity Paradigm and Action, Altruism and Love.



Excavator



Skid steer loader



Backhoe loader



Why you Choose us?

- * 1. RAY Attachments is a construction machinery attachments family. Provide kinds of excavator attachments and skid steer attachments and other machines you want to buy in China.
- * 2. RAY Attachments has 5 main factories to support different demands of our customers.
- * 3. RAY Attachments not only sells the goods to you, but also provide sales or project solutions and after service without worry.
- * 4. RAY's products are awarded ISO9001-2000 certificate, CE certificate and the relevant certificates according to export requirement in different area. Make your sales and after sales easier.

We sincerely hope to establish a partnership with your esteemed company, we always adhere to the principle of equality, mutual reciprocity and mutual benefit. It is our hope to promote by joint efforts, both trade, and friendship to our mutual advantage.

Our friends are omnipresent all over the world!

Hydraulic Breaker

The hydraulic breaker hammer is powered by pressure oil supplied from the pumping station of the excavator or loader and is more effective in the role of excavating building foundations to clear floating stones and soil from rock crevices. The principle of selecting a hydraulic breaker is to choose the most suitable hydraulic breaker according to the excavator model and the environment in which it will operate.

Unique advantages

- 20 years of professional production experience of the R & D team, to support you to better expand the market.
- RAY strictly controls each production process, with ISO quality system certification, CE certificate, to make trust easier.
- Unique heat treatment and cold treatment process to ensure more stable and reliable product quality, so that you can save more money and time.
- Sold 85 countries cooperated with 16 brands and solved 1522 cases.
- If you encounter any hydraulic breaker problems, we are 24h*7 online for you to answer.
- RAY has sufficient supply of spare parts to ensure timely response to after-sales service, so that you can after sale without worry.

Hydraulic Breaker

Ray Hydraulic Breaker-Your Best Choice



Side Type

1. Overall length shorter
2. Hook back things conveniently
3. Maintenance-free



Top Type

1. Easy to locate and control
2. More conducive to excavate
3. Weight lighter, the lower risk of broken drill rod



Box-Silenced type

1. Reduce noise
2. Protect the environment



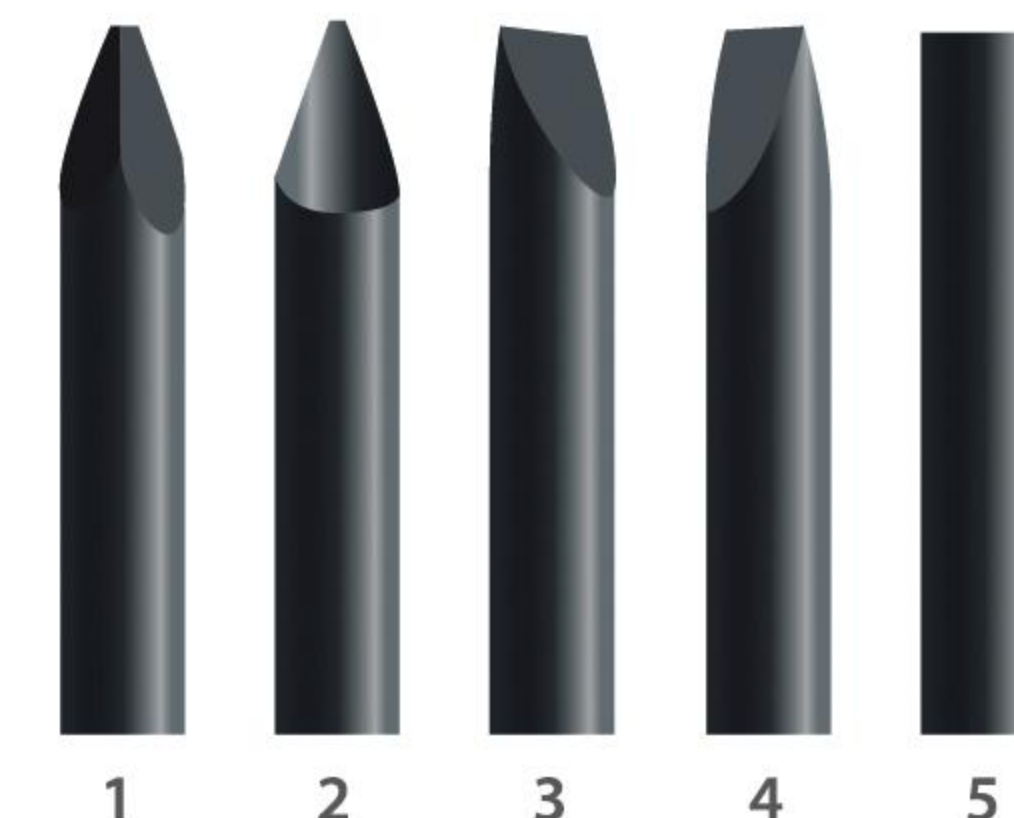
Backhoe Loader Type

for JCB3CX, 4CX, Case580, CAT 416D, John Deere 310J, 410J



Skid Steer Loader Type

for Bobcat185, CAT 216, CAT 226, 262 and other brands



CHISEL TYPE	APPLICATIONS
1 Moil Point Type(M)	Universal
2 Conical Type(C)	Multiple Purpose
3 H-wedge Type(H)	Trenching , Asphalt, Concrete
4 V-wedge Type(V)	Trenching, Asphalt, Concrete
5 Blunt Type(B)	Boulders Concrete

RHB Series Hydraulic Breaker Specification

Item	Model	RHB40	RHB45	RHB53	RHB68*	RHB75*	RHB80	RHB85	RHB100*	RHB125	RHB135*	RHB135G*
Total Weight	Side (Kg)	70	95	158	263	334	335	559	761	1277	1653	1680
	Top (Kg)	72	95	158	343	409	410	637	866	1308	1847	1880
	Box (Kg)	102	129	180	361	450	451	733	1007	1371	1893	1930
Operating Pressure	kg/cm ²	90-120	90-120	90-120	110-140	120-150	120-150	120-150	150-170	150-170	160-180	160-180
	Psi	1280-1704	1280-1704	1280-1704	1562-1988	1562-1988	1704-2130	1704-2130	2130-2414	2130-2414	2272-2556	2272-2556
Oil Flow	l/min	15-25	20-30	25-50	40-70	50-90	50-90	60-100	80-110	90-120	130-150	145-180
	Gpm	4-7	5-8	6.6-13.2	10.5-18.5	10.5-18.5	13.1-23.6	15.8-26.3	21.1-29.1	23.7-31.7	34.3-39.6	38.3-47.6
Impact Frequency	bpm	800-1400	700-1200	600-1100	500-900	400-800	400-800	400-800	350-700	350-650	400-600	350-500
Dia. of hose	mm	12.7	12.7	12.7	12.7	12.7	12.7	19.05	19.05	25.4	25.4	25.4
	inch	1/2	1/2	1/2	1/2	1/2	1/2	3/4	3/4	1	1	1
Chisel Diameter	mm	40	45	53	68	75	75/80	85	100	125	135	135
	inch	1.57	1.77	2.08	2.68	2.95	2.95	3.35	3.94	4.92	5.31	5.31
Chisel Length	mm	430	500	580	700	710	711	745	1055	1130	1200	1200
	inch	16.93	19.69	22.83	27.56	27.95	27.99	29.33	41.54	44.49	47.24	47.24
Chisel Weight	kg	4	8	9	18	22	26	29	57	94	115	115
Suitable Excavator	m ³	0.07	0.03-0.01	0.06-0.2	0.15-0.3	0.2-0.35	0.2-0.35	0.25-0.5	0.4-0.6	0.4-0.6	0.6-0.8	0.6-0.8
	Ton	0.8-2.5	1.2-3.0	2.5-4.5	4.0-7.0	6.0-9.0	6.0-9.0	7.0-14	10.0-15.0	15-18	18-26	20-26

*Most popular models

Item	Model	RHB140*	RHB140A	RHB150*	RHB155*	RHB165	RHB175	RHB185	RHB195	RHB200	RHB210
Total Weight	Side (Kg)	1774	1809	2218	2577	3277	3905	4365	5329	5900	7050
	Top (Kg)	2059	2094	2380	2745	3447	4057	4844	5623	6547	/
	Box (Kg)	2011	2046	2457	2968	2975	3902	4800	5330	6210	/
Operating Pressure	kg/cm ²	160-180	160-180	160-180	160-180	160-190	160-190	220-270	250-300	250-300	270-300
	Psi	2272-2556	2272-2556	2272-2556	2272-2556	2272-2699	2272-2699	3132-3843	3552-4260	3552-4260	3834-4260
Oil Flow	l/min	120-180	120-180	150-190	180-240	200-250	200-260	220-270	240-310	260-330	270-330
	Gpm	31.7-47.6	31.7-47.6	39.6-50.2	47.6-63.36	52.8-65.79	52.8-68.42	58.08-71.28	63.36-81.84	68.64-87.12	70.35-87.12
Impact Frequency	bpm	350-500	350-500	350-700	300-450	250-380	200-350	120-200	100-150	100-150	100-150
Dia. of hose	mm	25.4	25.4	25.4	31.75	31.75	31.75	31.75	31.75	31.75	31.75
	inch	1	1	1	1-1/4	1-1/4	1-1/4	1-1/4	1-1/4	1-1/4	1-1/4
Chisel Diameter	mm	140	140	150	155	165	175	185	195	200	210
	inch	5.51	5.51	5.91	6.102362205	6.496062992	6.88976378	7.283464567	7.677165354	7.874015748	8.267716535
Chisel Length	mm	1300	1300	1300	1500	1500	1600	1600	1650	1650	1750
	inch	51.18	51.18110236	51.18110236	59.05511811	59.05511811	62.99212598	62.99212598	64.96062992	64.96062992	68.8976378
Chisel Weight	kg	126	135	157	190	215	255	260	304	315	366
Suitable Excavator	m ³	0.7-0.9	0.7-0.9	0.9-1.2	1.1-1.4	1.2-1.6	1.4-1.8	1.4-2.0	1.6-2.2	1.8-2.5	2.4-3.2
Suitable Carrier Weight	Ton	18-26	18-26	27-35	28-35	30-40	35-45	40-55	45-55	50-60	60-70

Hydraulic Breaker Spare Parts

Ray Hydraulic Breaker-Your Best Choice



Control Valve



Accumulator



Side Bolts



Front Cover



Through Bolts



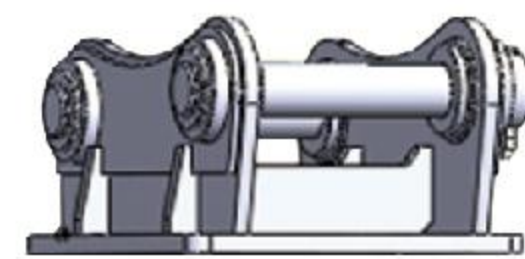
Ring Bushes



N2 Charging Kit



Mounted Pin Kit



Rod Pin And Stop Pin



Piston



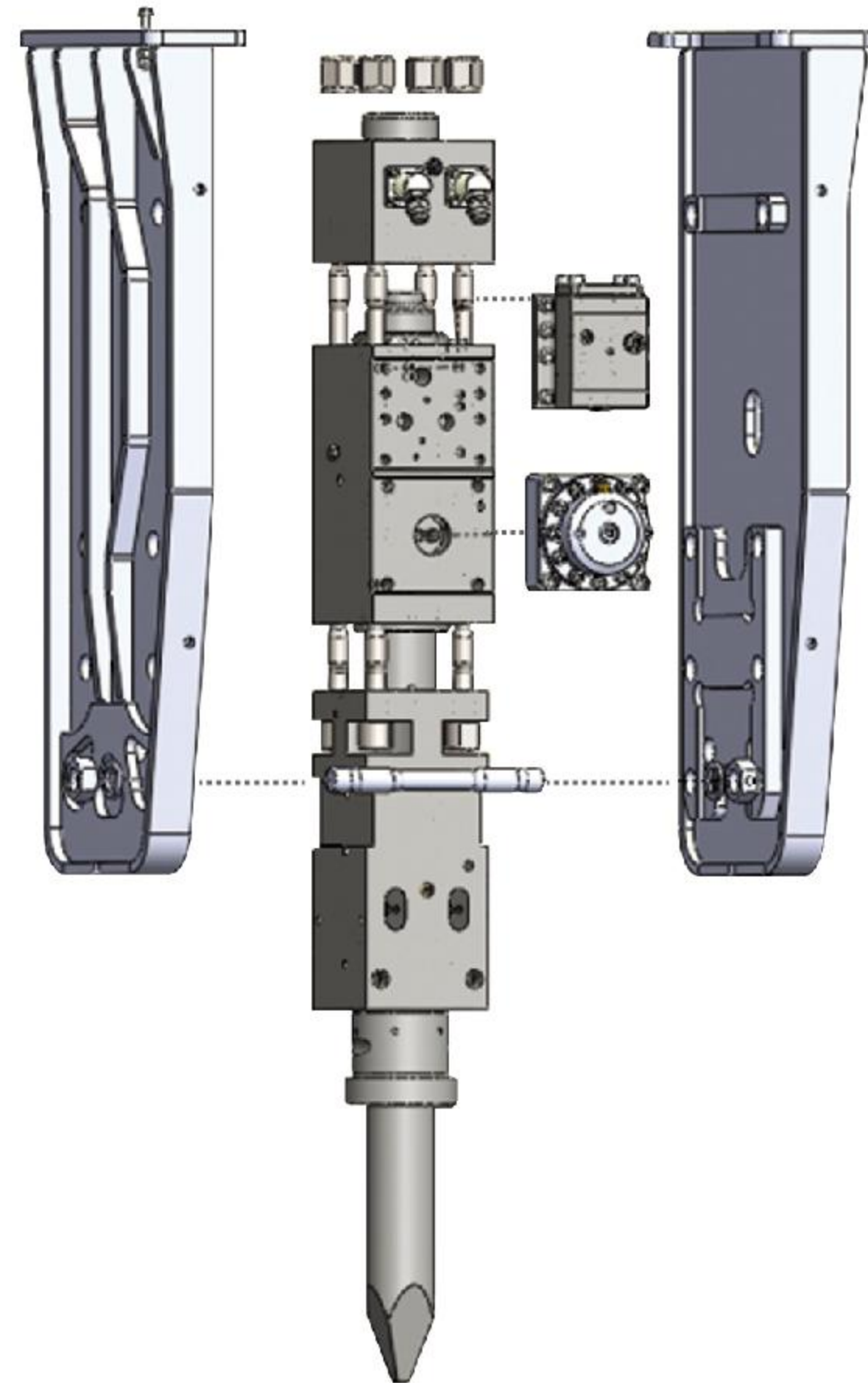
Back Head



Front Head Ass'y



Cylinder With Piston



Seal Kits



RAY also provides all the accessories for hydraulic breakers, so you can use them directly.

Piping Spare parts



Hoses



Piping Kits



Stop Valve



Pedal Valve



Spare Valve



Bracket

Automatic Greasing



Auto Grease System(aluminum)



Auto Grease System(plastic)

Customized Chisel



Standard Chisel



Customized Chisel

Product Differentiation

Unconditional warranty

WARRANTY POLICY

1. Basic Policy for Standard Warranty
This basic policy for standard warranty is to give instruction by Changzhou RAYMOND Precision Machinery Co., LTD. (hereinafter "RAY")

(1) The standard warranty period for RHB hydraulic breaker & attachments is 12months from the first delivery date to the end-user. Surely, the distributor has to give proof to evidence the fact of first delivery by written or printed evidence to RAY. This first delivery date to the end-user should be within 6 months from date of Bill of Lading.

In Case, the hydraulic breaker(s) in stock weren't sold for 6 months or more than 6 months, RAY can only offer maximum 6 months grace period from date of Bill of Lading to extend warranty time based on 12 months standard warranty period. If means the maximum warranty time will be 18 months from date of Bill of Lading under this case.

(2) If owner don't give any proof to RAY to verify the fact of delivery to end-user, RAY should set the period of warranty to be 13 months from the shipping date of Bill of Lading.

Warranty shall not be applied to the wearing and consumable parts, except that the problem concerned are happened by the faults of manufacturer.

It is strongly recommended that the genuine spare parts supplied from RAY should be used at all times.

2. Warranty Claim
Each claim must be reported separately on a standard warranty claim form or by using a product report from within 15 days from the date of repair which includes following:
 ♦ Model No. and Serial No. of the hammer body
 ♦ Cylinder Serial No. is considered as hammer Serial No.)
 ♦ Serial No. and Part No. of the detected parts
 ♦ Date of the delivery and date of defect
 ♦ Operating hours/evidence of claim, just for reference.)
 ♦ Clear description of the fault
 ♦ List of the replaced parts with part No.
 ♦ Detailed pictures and images concerned detected part
 ♦ Any other evidences and reference materials

3. No Cover Wearing Parts such as below:
 ♦ All kinds of Tool including iron post, chisel/weight and blunt types
 ♦ All kinds of Seal and Rings
 ♦ All kinds of Spring and Buffers
 ♦ All kinds of Bolt and Plugs except through bolt and side bolt.

4. The below-mentioned cause shall be excluded from the warranty service.
 ♦ Operation fault, mistake, misuse by users
 ♦ Due to the missing of unauthorized spare parts (not original RAY parts)
 ♦ All wearing parts as the tool, tool pin, bush pin, seal kit and etc.

5. Warranty Period for Main parts

No.	PART NAME	MONTH	REMARKS
1	BACK HEAD	12	
2	CYLINDER	12	
3	FRONT HEAD	12	
5	ACCUMULATOR	12	
6	VALVE ASSY	12	
4	PISTON	12	Under the circumstance of crack exclude scratch
7	ROD PIN	3	
8	STOP PIN	3	
9	THROUGH BOLT ASSY	6	
10	SIDE BOLT ASSY	6	
11	FRONT COVER	NO	
12	RING BUSH	NO	
13	TOOL (moil, chisel and blunt, wedge)	NO	
14	SEAL KIT	NO	
15	Diaphragm plate	NO	

** All warranty parts shall be replaced by CAP (Crack Seal). Other roller seal, including labels, to be supplied by distributors.
 ** All replaced parts may be added in the best order for the sake of cost saving as most possibility.

Product Warranty

Breaker Warranty Regulations Formulate: 2018.11.12 Modify: 2020.12.29

S/N	Parts	Status	Warranty Time (month/hour)		Deliver Date	Shipment Not Warranted
			400-1000 Cylind (R40-100mm)	Over 1000 Cylind (R40-160mm)		
1	Piston Head	Crack	12	6		1. Damage caused by external impact 2. Damage caused by improper operation 3. The seal and strain caused by improper maintenance
2	Back Head	Crack	12	6		1. The strain caused by the foreign matter in the hydraulic oil 2. The oil seal replacement time is not correct 3. The seal and strain caused by improper maintenance
3	Cylinder Head	Crack	12	12		1. The strain caused by the foreign matter in the hydraulic oil 2. The oil seal replacement time is not correct 3. The seal and strain caused by improper maintenance
4	Piston	Crack	12	6		1. The strain caused by the foreign matter in the hydraulic oil 2. The oil seal replacement time is not correct 3. The seal and strain caused by improper maintenance
5	Valve Set	Crack	12	6		1. The strain caused by the foreign matter in the hydraulic oil 2. The oil seal replacement time is not correct 3. The seal and strain caused by improper maintenance
6	Through Bolt Set	Crack	6	3		1. The strain caused by the foreign matter in the hydraulic oil 2. The oil seal replacement time is not correct 3. The seal and strain caused by improper maintenance
7	Accumulator	Crack	6	3		1. The strain caused by the foreign matter in the hydraulic oil 2. The oil seal replacement time is not correct 3. The seal and strain caused by improper maintenance
8	Ring Bush	Crack	6	3		1. The strain caused by the foreign matter in the hydraulic oil 2. The oil seal replacement time is not correct 3. The seal and strain caused by improper maintenance
9	Moil	Crack	1	1		1. The strain caused by the foreign matter in the hydraulic oil 2. The oil seal replacement time is not correct 3. The seal and strain caused by improper maintenance
10	Roller	Crack	3	3		1. The strain caused by the foreign matter in the hydraulic oil 2. The oil seal replacement time is not correct 3. The seal and strain caused by improper maintenance
11	Side Bolt	Crack	3	3		1. The strain caused by the foreign matter in the hydraulic oil 2. The oil seal replacement time is not correct 3. The seal and strain caused by improper maintenance

Remarks
 1. The above warranty is based on the quality and technical level of the original equipment manufacturer in accordance with the breaker "usage and life" parameters.
 2. If there are major quality problems after repair and maintenance, in accordance with the specifications, the main body can be replaced by the new one, and the roller assembly can be replaced with the same model.
 3. The broken parts (including labels) of the new assembly should be added in the best order for the sake of cost saving as most possibility.
 4. Customers concerned refer to the defects of the part body.
 5. The customer is responsible for the damage caused by improper operation in the actual field.
 6. The above warranty period is measured by 8 hours/24 hours/30 days/month. Other time and conditions are recorded in the same time measured by the first one.

VS

Quality comparison



Main Body



Rubber



Housing



Package

★ High quality hydraulic breaker comes from the world's top manufacturer that realizes superior durability, crushing power, and work efficiency.

★ All steel structural produced by our own to ensure the quality.
 ★ Enough(11 pcs) rubbers quantity to protect structural and keep less noise.

Value-added services and OEM design

★ Customized logos



Seven systems

01 Supply System



Flaw detection

- 1.Ensure the chemical of composition is within the standard range.
- 2.Ensure the material is 100% qualified.



Micro hardness tester

- 1.The report confirms whether the tensile strength,yield strength can meet the requirement of production.
- 2.To double confirm raw material quality is stable.



Carbon potential meter

- 1.To ensure the hardness if meet the product quality requirement.

★ Raw Materials: More purities stable quality and good performance



02 Production System

★ Longer lifetime for core components with advanced and unique heat treatment production lines.



Cold Heat Treatment



Assembling



Removal



Shot Blasting



Welding



Painting

03 Warehousing System

★ All spare parts are placed in designated locations to ensure lead time. We have some models are in stock.



04 Packaging System

★ All packaged goods have a layer of tinfoil packaging to ensure that the packaging is clean when the customer receive the goods, and each hydraulic breaker has a separate export wooden box.



05 QC System

★ A certificate of conformity with signature show who is responsible for inspection. Inspection record to show which part,what time, who is responsible for inspection.



06 Shipping System

★ 100% be tested before shipping in order to delivery failure rate is 0.

07 After-sales System

★ Provide serial number of products with pictures and videos and quantity--after sales department will provide solution and explain why the problem cause (within 24 hours)--discussing how to arrange the solution well and done.

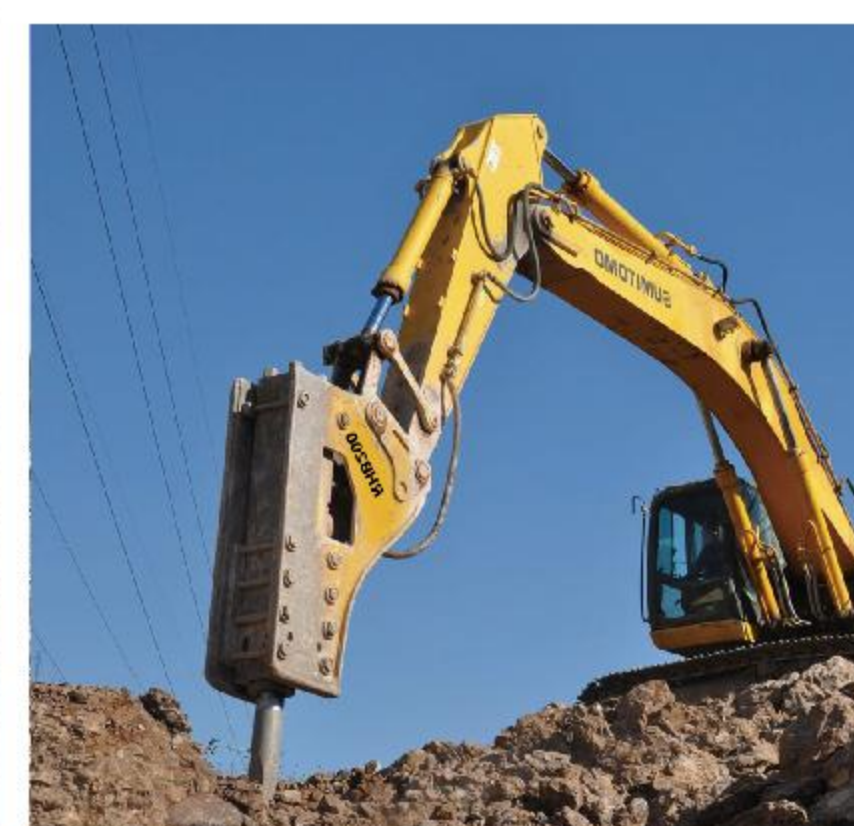
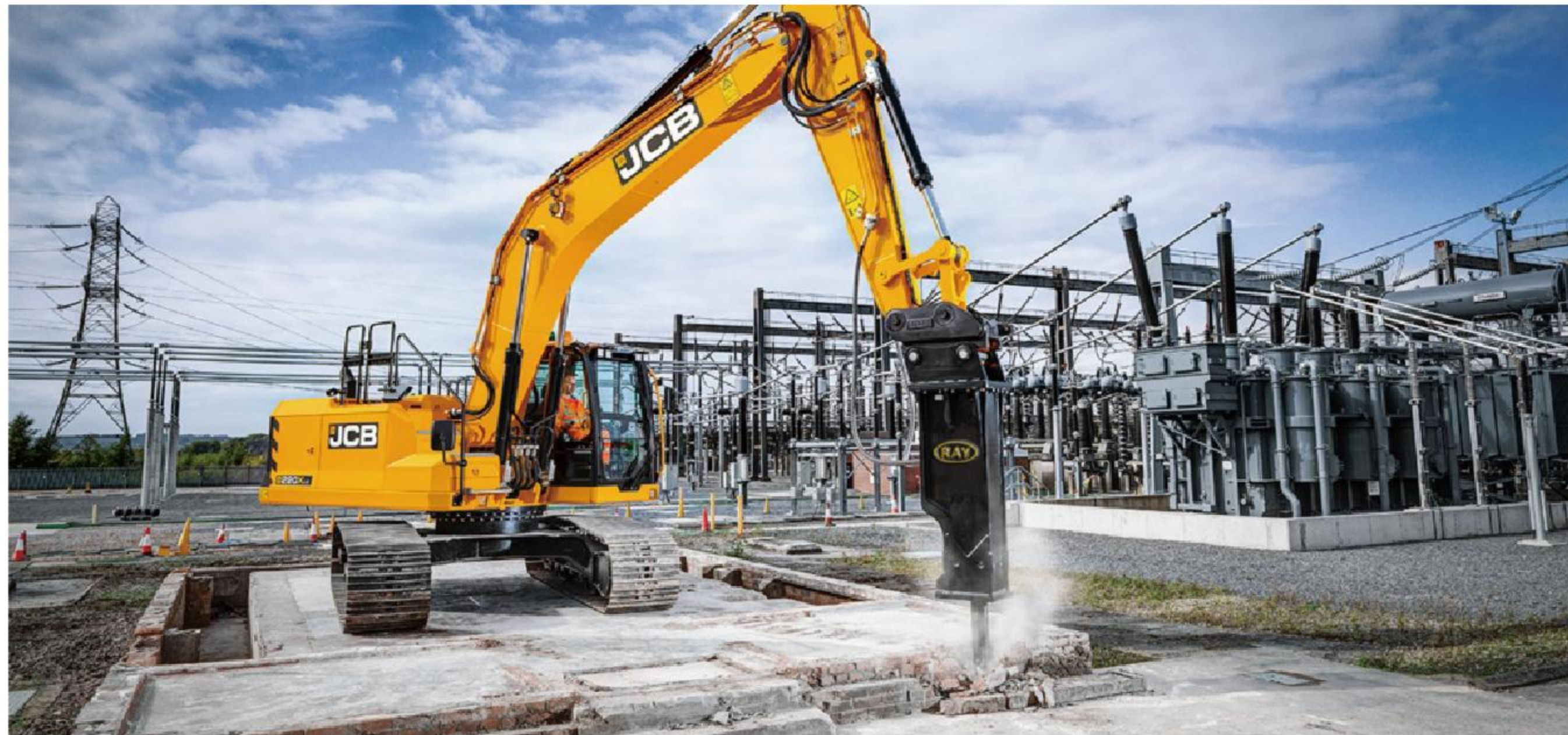


RAY ATTACHMENTS'PRODUCT' PROBLEM FEEDBACK SHEET						
Product No.	Product Description	Problem Description	Serial Number	Customer Name	Contact Information	Resolution

Tire Size Chart		
Product No.	Product Description	Resolution

Application

Excavator



Skid steer loader



Backhoe loader



Project Cases



Excavator model: XCMG XE49DK
Hydraulic breaker: RHB175 Box silence type
Country: Germany



Skid steer loader : CASE CX36
Hydraulic breaker: RHB53 Box silence type
Country: New Zealand



Skid steer loader : NEW HOLLAND L220
Hydraulic breaker: RHB68 Box silence type
Country: Australia



Excavator model: SANY SY215C
Hydraulic breaker: RHB150 Box silence type
Country: United kingdom



Excavator model: SUMITOMO SH300
Model: RHB150 Box silence type
Country: United kingdom



Excavator model: YANMAR VIO27-6
Model: RHB40 top type
Country: Australia



Excavator model: Hitachi EX210
Model: RHB140 top type
Country: Indonesia



Excavator model: CASE CX80
Model: RHB75 top type
Country: Mexico



Skid steer loader : CASE SV185
Model: RHB53 Box silence type
Country: Brazil



Related Products

Drilling Piling Series



EARTH AUGER



VIBRO HAMMER



SIDE GRIP VIBRO HAMMER

Breaking demolition series



HYDRAULIC CRUSHER



FIXED PULVERIZER



ROTATION PULVERIZER

Grab series



HYDRAULIC GRAPPLE



STEEL SCRAP GRAPPLE



DEMOLITION GRAB



VIBRO RIPPER

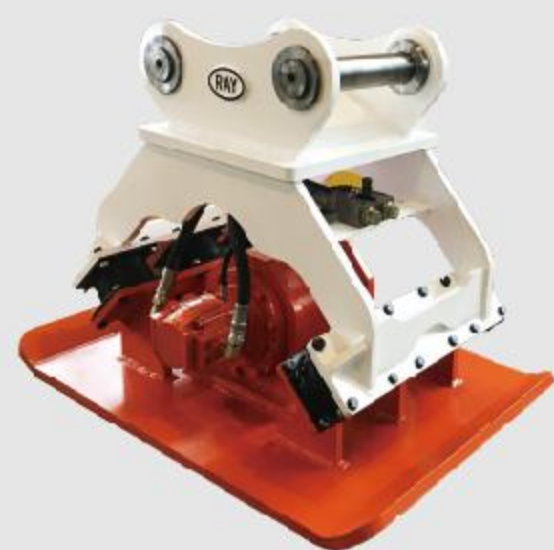


EAGLE SHEAR



PILE BREAKER

Compaction series



HYDRAULIC COMPACTOR



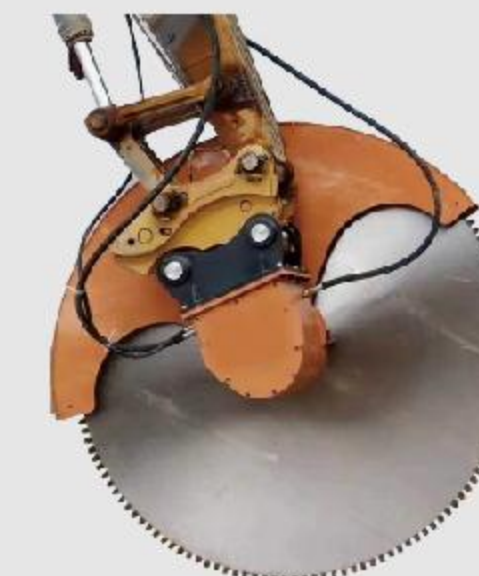
COMPACTION WHEEL(CUSTOMIZE)



COMPACTION WHEEL



DRUM CUTTER



ROCK SAW



CRUSHER BUCKET

Connection series



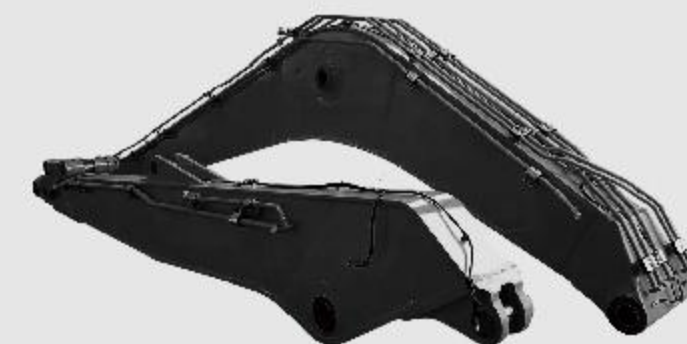
QUICK HITCH



MULTI HITCH



TILTING HITCH



LONG BOOM

Buckets series



TILT BUCKET



ROTARY SCREEN BUCKET



ROCK BUCKET



STANDARD BUCKET